

FOR LEASE: CLASS A OFFICE SPACE

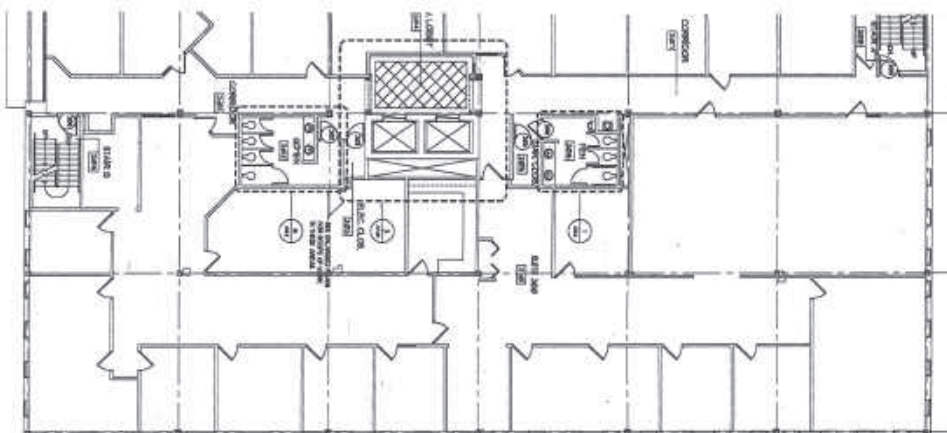
60 W. BROAD STREET • BETHLEHEM, PA



IMMEDIATE OCCUPANCY

Competitive Rates & Flexible Terms

- Up to 8,100 SF, will divide.
- 2nd Floor
- Excellent location in the heart of the Bethlehem Business District.
- City parking garage (North Street) located directly behind building.
- Within walking distance to a variety of restaurants and boutique-style shops.
- Great visibility with heavy daytime foot and car traffic.
- Downtown setting offers plenty to see, do and eat year-round.



DOUGLAS D. KELLY, CCIM

610.332.7320, EXT 1

DKELLY@EMERALDREALTYGROUP.COM



COMMERCIAL BROKERAGE SERVICES